



# THE LEGACY

NEWSLETTER OF THE HOWARD COUNTY HISTORICAL SOCIETY

*Spring 2012, Volume 49, Number 1*

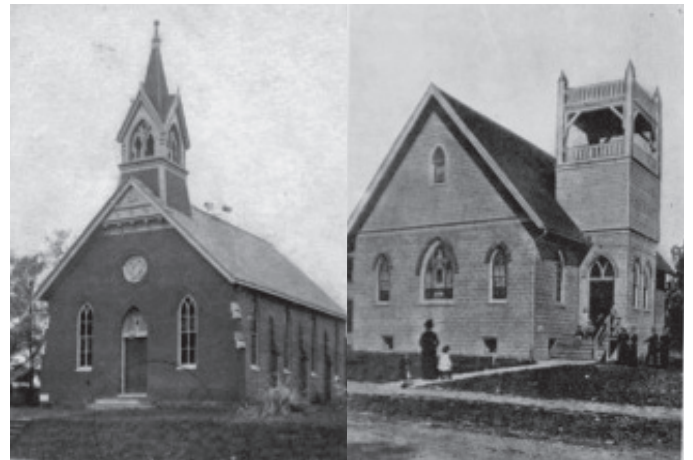
## THE WAR BETWEEN THE METHODISTS

Ever wonder why a small town like Laurel Maryland would have two historic Methodist churches dating back to the mid 19th century? The answer is simple. Seventeen years before the War Between the States there was the War Between the Methodists. The first “shots” in this war were fired in 1844 at the Conference of the Methodist Episcopal Church in Lexington, Kentucky. But unlike the Civil War, with its numerous causes for division, the only dividing issue between the Methodists was slavery.

When the Methodist Episcopal Church was founded in the United States in 1784, the denomination officially opposed slavery. In the early 19th century the MEC weakened its stance, though clergy were still expected not to own slaves. Conflict arose in 1840 when the Rev. James Andrews of Oxford, Georgia, a bishop, inherited a slave from a parishioner. Fearing that she would end up with an inhumane owner if sold, Andrews kept her but let her come and go. The 1840 Church General Conference considered but did not expel him. Four years later, Andrews married a woman who owned a slave inherited from her mother, making the bishop the owner of two slaves.

The 1844 General Conference voted to defrock the bishop unless he freed his slaves. The decision raised questions (particularly among southern delegates) about the authority of a Conference to discipline bishops. Of course, the cultural differences that had divided the nation during the mid-19th century had also been dividing the Methodist Episcopal Church. The 1844 dispute led Methodists in the south to break off and form a separate denomination, the Methodist Episcopal Church, South.

In Laurel, the Methodist Episcopal Church started out by



LEFT: THE “NORTHERN” CENTENARY M.E. CHURCH IN LAUREL, THAT REPLACED THE FIRST STONE CHURCH, WAS BUILT IN 1884.

RIGHT: THE ORIGINAL SOUTHERN METHODIST CHURCH WAS BUILT IN 1866, A YEAR AFTER THE END OF THE CIVIL WAR.

accepting a “gift of stone and a grant of land” from the Laurel Mill Company in 1842 for its first house of worship. In 1866, the Southern Methodists in Laurel built their own church known as the “frame church” to distinguish it from the old stone church. In 1884 the “northern” Methodists moved from the old stone church and built a brick church they named Centenary M.E. Church in commemoration of the founding of Methodism in America. In 1912 the Southern Methodists moved into a new church, which was known as Trinity M.E. Church, South. The northern and southern branches of Methodism were reunited in 1939, when slavery was no longer an issue.

### HCHS MUSEUM

8328 Court Ave., Ellicott City, Maryland 21043  
(Formerly First Presbyterian Church)

**(410) 480-3250**

Hours: Friday and Saturday:  
1:00 – 5:00 P.M.

[www.hchsm.org](http://www.hchsm.org)

### HCHS LIBRARY

New location: The Charles Miller Branch Library and Historical Center  
9421 Frederick Rd., Ellicott City, Maryland 21042

**(410) 480-3250** (voice & fax)

Hours: Tuesday, 1:00-8:00 P.M.  
Wednesday, Thursday and Saturday, 1:00- 5:00 P.M.

Mailing Address: P.O. Box 109, Ellicott City, Maryland 21041

## PRESIDENT'S MESSAGE

LEONORA HOENES

How do you like our new space at the Miller Branch? I am sure that you are as impressed as I am. How fortunate we are to be able to enjoy our new location. We have benefited from the support of past and present heroes of the Society.

What spectacular things the Society can do now! Our expansion is only limited by the involvement of you, our members. The challenge is yours to accept. The staff at the Miller Branch excels at being helpful as we find our way. The

new volunteer coordinator, Paulette Lutz, is keeping quite busy as people visit the Library. Paulette herself is a volunteer.

The challenge is ours to be the best we can be. Help the Society stretch to meet the demands and opportunities of the 21st century. Dream and imagine where we can go and plan how to make it happen. Do you have an idea or a dream in your thoughts? Share that dream and together we will make it a reality.

I welcome and encourage every one of you to become involved and make the Howard County Historical Society extraordinary. ♣

## LETTER FROM THE EXECUTIVE DIRECTOR

LISA MASON-CHANEY

Greetings! What an incredible couple of months we have had. The new Howard County Historical Society Center opened December 17th with much fanfare and enthusiasm. Over 1700 visitors came through our doors that day. Helping us out that day with crowd control, giving tours, answering questions and chatting with curious guests were many wonderful volunteers (some in period dress!) and Board Members.

Since then our attendance and membership has continued to rise. We have doubled our visitation from last year, have added many fantastic new volunteers and generally increased our visibility. Being affiliated with the Miller

Branch has been a wonderful experience for the HCHS. We couldn't be happier in our new home! The library staff are wonderful neighbors and everyone associated with the Miller Branch has been terrific and accommodating.

Henry Stansbury was the first in our lecture series and gave a standing-room-only lecture about the Civil War. The room was filled to capacity and we had to turn interested people away. We are very excited about our next featured speaker, Jehanne Wake who will talk about her book "Sisters of Fortune" on March 25th at the Museum.

Once again, I would like to offer a heartfelt thank you to everyone who has so generously given their time and expertise to make the HCHS a tremendous success. It is a pleasure and a privilege to work amongst such dedicated people. ♣

## HOWARD COUNTY HISTORICAL SOCIETY BOARD OF DIRECTORS AND OFFICERS

Leonora Hoenes ..... *President*  
 Shelley D. Wygant ..... *1st Vice President*  
 Richard T. Clark ..... *2nd Vice President*  
 Anne Schoenhut ..... *Corresponding Secretary*  
 George Arthur ..... *Treasurer*

## BOARD OF DIRECTORS

### 2010-2013

Sheila Welton  
 Janet Marshall  
 Susan Stonesifer  
 Carol Myers

### 2012-2014

Patricia Sadler  
 Paulette Lutz  
 Betty Adams  
 Paul L. Miller

### 2012-2015

Connie Coss  
 Mary Boyle  
 Judith Draper  
 Phil Stackhouse

## STAFF

Lisa Mason Chaney ..... *Executive Director*  
 Karen Griffith ..... *Volunteer Museum Director*

## HONORARY BOARD MEMBERS

Charles M. Coles  
 Doris Fredericks  
 W. Henry Griffith  
 Helen Jones  
 Consuelo Regan-Alexander  
 Gladys H. Wahlhapter  
 Barbara Warfield  
 Charles E. Wehland  
 Granville W. Wehland

## SEND US YOUR ARTICLES

Anyone interested in contributing articles or photographs or anything of interest to the Society, please call the Library at 410-480-3250 or email Shelley Wygant at [wgdirect@mac.com](mailto:wgdirect@mac.com)

## EDITOR'S NOTE

JANET KUSTERER

A new home for the library, a new president and a new executive director—these are challenging and exciting times for the Society. I hope that those of you who like to write will spend some time in our easily accessible research space and come up with some interesting ideas for stories to share in this newsletter. We welcome your participation. Email your ideas to me at [janetkusterer@juno.com](mailto:janetkusterer@juno.com). Thanks! ♣

## HCHS LAUNCHES NEW WEBSITE.

Back in the early 2000s, when the Howard County Historical Society launched its first website created by Mays Advertising under the direction of then-president Richard T. Clark, it was considered a state of the art site providing members and the general public alike with information about the Society and access to our extensive marriage license database.

But when it comes to technology, time marches on at a lightning fast pace, and an update has been long overdue. And now thanks to the generosity of Euro RSCG – an integrated marketing and advertising agency in Baltimore that has developed and executed our fantastic new site at no cost to the Society – we now have a brand new online presence with the kind of functionality that will help the Society advance our mission of collecting, preserving and sharing our county's rich history.

"Our goals for the website were to establish a distinct identity for the Society, to enable users to join, renew, donate, purchase books and tickets online, and to allow the Society to refresh content quickly and inexpensively," said Jeff Wygant, Senior Vice President, Executive Creative Director at EURO RSCG. "We



chose the Squarespace platform to design and host the site, because it allowed us to create a beautiful, functional website that's simple to update. That way, the public will stay engaged with the site and the Society."

E-commerce capabilities and our searchable Marriage License database should be up and running soon. In the meantime, please visit us online to see what all the excitement is about and if you haven't already, "like" us on Facebook. It's a great way to keep up with all that's going on with the Society. ♣

## GREAT NAMES IN HOWARD COUNTY HISTORY

LIBRARY FUND DRIVE PICKS UP STEAM.

Launched last fall and led by Honorary Chairman and HCHS Board Member, Paul Miller, the Great Names in Howard County History Library Fund Drive continues to draw in contributions to help support the Society's efforts to preserve and share our county's fascinating history with seasoned researchers and budding history buffs alike. Thus far the campaign has raised over \$35,000 in contributions from the Society's board and generous members. Donors contributing between \$250 and \$2,499 will have their "Great Name" recognized on an upcoming video display while those contributing \$2,500 or more will have theirs inscribed on a permanent donor board – both of which will be located in the Society's public reading room at the Miller Branch Library and Historical Center. For more information or to make a contribution to this ongoing fund drive call or email the Society or visit our website at [www.hchsm.org](http://www.hchsm.org) today. ♣

HCHS IS ON

facebook

BECOME A FAN TODAY!

For up-to-the minute news on happenings at the Society, become a fan on FaceBook. In addition to finding out what we are up to, you can also post comments, questions and photos of Society events and Howard County history. If you aren't on FaceBook yet, sign up today at [www.facebook.com](http://www.facebook.com). ♣

## LIBRARY AND HISTORICAL CENTER GRAND OPENING DECEMBER 17, 2011



ABOVE: PHIL STACKHOUSE CONDUCTS A GUIDED TOUR OF THE NEW FACILITY

LEFT: VOLUNTEERS IN PERIOD DRESS WELCOME VISITORS TO THE HISTORICAL CENTER



## 2012 MARYLAND HOUSE & GARDEN PILGRIMAGE TO BENEFIT HCHS.

HOSTED BY THE HOWARD COUNTY HISTORICAL SOCIETY, THE HOWARD COUNTY PORTION OF THE 2012 MARYLAND HOUSE & GARDEN PILGRIMAGE WILL BE HELD ON SATURDAY, MAY 19TH FROM 10 A.M. TO 5 P.M. WITH PROCEEDS GOING TO HELP UNDERWRITE THE SOCIETY'S EXPENSES FOR MOVING OUR ARCHIVES AND RESEARCH LIBRARY TO THE NEW CHARLES M. MILLER BRANCH LIBRARY AND HISTORICAL CENTER.

OWNERS OF SIX SPECTACULAR HISTORIC PROPERTIES PLUS THE SHRINE OF ST. ANTHONY'S WILL OPEN THEIR HOMES AND GARDENS TO VISITORS ON THIS ANNUAL SELF-GUIDED TOUR. TOUR GOERS CAN LOOK FORWARD TO A WIDE RANGE OF HORTICULTURAL AND ARCHITECTURAL DELIGHTS AS THEY EXPLORE THE FOLLOWING SITES.



SPRING HILL QUARTERS

### WAVERLY MANSION

Home of Maryland's 25th governor, George Howard, the 75 foot long mortar covered stone mansion is believed by some to have been the first home built on the property by Nathan Dorsey, the original settler, who was born in 1731. While there is no ornate trim on the exterior of the house, three large double chimneys attest to the existence of fireplaces in most of the rooms, a mark of luxury in 18th and 19th century homes. Waverly will only be **ONLY** open between 10 AM and 2 PM because of an event scheduled there that evening.

### OAKDALE

Oakdale was originally patented to the Warfields' in 1766. The original structure was built in 1838 by Albert Warfield, father of Governor Edwin Warfield. In 1898, Ed Warfield enlarged the home, including the huge columns on the front portico and lengthy side porches. He beautified the interior by adding handsome woodwork which was hand-carved in Oakdale's shops. Today the mansion boasts 23 rooms a stately stairway with a beautiful Palladian window and broad balcony overlooking the foyer, fireplaces on all three floors and six bathrooms, all of which still retain the lavish space and beautiful wide marble lavatories.

### SHRINE OF ST. ANTHONY'S

The Shrine of St. Anthony is located on land once owned by Charles Carroll, the only Catholic Signer of the Declaration of Independence. Purchased by the Franciscans and built as a formation house for new initiates into the Order, the Shrine has been in operation since 1930. Constructed within the same architectural lineage as the "Sacro Convento" in Assisi, the natural beauty of the land is only highlighted and cultivated by the unique presence of the Shrine. Gifted to the Shrine from the

Friars in Padua, Italy, the chapel holds a singularly exquisite reliquary containing a relic of St. Anthony. Guided tours of the Chapel, Library and Refectory will be given on the half hour during the normal tour hours.

### RICHLAND FARM

In 1719, Lord Baltimore presented a land grant of 1,200 acres to Thomas Worthington, who built the original structure in the late 1700's. Today the farm consists of 133 acres and 8 out buildings and has remained in the family for almost 300 years. The current owners of Richland Farm are direct descendants of Thomas Worthington. The original structure was a two-story log kitchen and living room. Additions include a two story-wing and two story wing, built in 1846 and 1920, respectively. The home now is truly a manor but retains its original heritage. The home now has 8 bedrooms, 5 bathrooms, with various parlors and sitting rooms and retains the original log kitchen with its ancient stone fireplace, now used as the dining room.

### WHITE HALL MANOR

Constructed in the early 1800s, White Hall came into existence as part of a land grand involving "Freedom's Progress" and "Dorsey's Search". It is believed the structure's main section and west wing were erected between 1810 and 1820. The acreage passed from Judge Richard Ridgely to Col. Charles Worthington Dorsey, a prominent Maryland planter and participant in the War of 1812. Mary Tolley Dorsey was born at Hall and later married Thomas Watkins Ligon, the 33rd Governor of Maryland. After near destruction by a fire in 1893 the property remained unoccupied until Ligon's son Charles Worthington Dorsey Ligon purchased 430 acres and the house in 1900. Reconstruction included refinements such as granite, brick, stucco scored to



WAVERLY MANSION



OAKDALE



SHRINE OF ST. ANTHONY'S



RICHLAND FARM



WHITE HALL MANOR



SPRING HILL

simulate ashlar masonry, massive brick chimneys, an impressive Palladian window, and a charming center hall connecting the front and back entrances.

### SPRING HILL

The land on which Spring Hill stands was originally a tract patented in 1695 to Samuel Chew as "Chew's Resolution Manor" which came into the hands of Caleb Dorsey in 1718. Spring Hill was the gift of Caleb Dorsey, of Belmont, to his daughter Rebecca who married Charles Ridgely, the builder of "Hampton" near Towson, MD. It was part of a tract known as "Rebecca's Lot. This fine brick house laid in English garden wall brick bond has had numerous additions spreading ward, the most recent in 2009. Both the kitchen

and dining room are of log construction and a portion of the original log wall was restored and made visible during the 2009 addition to the house.

### SPRING HILL QUARTERS

East of the main house lies Spring Hill Quarters, occupied in 1798 by Edward Hill Dorsey and used to house the workers on the property. It has access from New Cut Road and later served as a carriage house for Spring Hill. An earthen floor and wooden cells remained until 1914 when it was converted to a tenant cottage. The beamed ceilings and small window openings with two feet deep sills are noteworthy. Of particular beauty is the walled garden set inside the foundations of the old barn. A small spring originally

used to water the animals now feeds the garden. Note the espaliered fruit trees on the wall. Also charming is the small springhouse bordered by the Romeo/Juliet fence entrance.

Advance tickets for the tour are \$30 and can be purchased online at [www.mhgp.org](http://www.mhgp.org) or by completing and mailing the enclosed form along with your check to HCHS. Tickets can also be purchased on the day of the tour at your first stop for \$35. If you are interested in purchasing the benefactors pass that includes access to all 5 tours – Anne Arundel, Baltimore City/Bolton Hill, Howard County, St. Mary's Count and Talbot County -- please call (410) 821- 6933 or send an email to [mhgp@aol.com](mailto:mhgp@aol.com). ✚



## ANNUAL MEETING

The annual meeting was held at the Miller Library and Historical Center on Sunday, February 26.

RIGHT: NEWLY ELECTED PRESIDENT, LEONORA HOENES HONORED VOLUNTEER MUSEUM DIRECTOR, KAREN GRIFFITH AS HCHS's 2011 VOLUNTEER OF THE YEAR IN RECOGNITION OF HER HARD WORK AT THE HCHS MUSEUM AS WELL HER OUTSTANDING EFFORTS ON THE HOLIDAY HOME TOUR, BEING THE HCHS REPRESENTATIVE ON THE BOARD OF THE ELLICOTT CITY RESTORATION FOUNDATION AND HER COMMUNITY OUTREACH WORK. TO SHOW THE SOCIETY'S APPRECIATION, SHE WAS PRESENTED WITH A PERSONALIZED PEWTER MINT JULEP CUP ENGRAVED WITH THE SOCIETY'S LOGO

FAR RIGHT: INCOMING PRESIDENT LEONORA HOENES AND BOARD MEMBER AND MILLER LIBRARY DIRECTOR SUSAN STONESIFER

BOTTOM: MEMBERS ENJOYED A POT LUCK LUNCH BEFORE THE MEETING.



## HOWARD COUNTY HISTORICAL SOCIETY MEMBERSHIP APPLICATION

☐ YES, I WOULD LIKE TO JOIN THE HOWARD COUNTY HISTORICAL SOCIETY AND ENJOY MEMBERSHIP BENEFITS THAT INCLUDE A SUBSCRIPTION TO THE LEGACY, INVITATIONS TO EXCLUSIVE EVENTS, A 10% DISCOUNT ON PUBLICATIONS, PLUS A HANDSOME HCHS CAR MAGNET EMBLEM IF I JOIN AT THE CHARTER MEMBER LEVEL OR HIGHER.

MY CHECK, MADE PAYABLE TO THE HOWARD COUNTY HISTORICAL SOCIETY, IS FOR THE FOLLOWING CATEGORY:

### MEMBERSHIPS

<input type="checkbox"/> STUDENT	\$10
<input type="checkbox"/> SINGLE	\$30
<input type="checkbox"/> FAMILY	\$45
<input type="checkbox"/> CHARTER	\$60
<input type="checkbox"/> SUSTAINING	\$100

### CORPORATE MEMBERSHIPS

<input type="checkbox"/> BRONZE	\$100
<input type="checkbox"/> SILVER	\$250
<input type="checkbox"/> GOLD	\$500
<input type="checkbox"/> PLEASE UPGRADE MY CURRENT MEMBERSHIP TO CHARTER MEMBERSHIP LEVEL WITH THE ENCLOSED \$30 DONATION AND SEND ME AN HCHS CAR MAGNET. INCLUDES ALL BENEFITS PLUS RECOGNITION IN THE LEGACY.	



NAME \_\_\_\_\_

ADDRESS \_\_\_\_\_

TELEPHONE: (\_\_\_\_) \_\_\_\_\_

E-MAIL: \_\_\_\_\_



PLEASE MAIL THIS COMPLETED FORM AND CHECK TO:  
HOWARD COUNTY HISTORICAL SOCIETY, P.O. Box 109, ELlicott City, MD 21041



**2012 HOWARD COUNTY TOUR  
TICKET ORDER FORM**

On May 19, 2012, the owners of some of Howard County's most beautiful homes will open their front doors and garden gates to the public as part of the annual Maryland Home and Garden Pilgrimage which will benefit the Howard County Historical Society. And you can be a part of it by purchasing tickets for the tour today at a reduced price of just \$30 per person (regular price is \$35). Perfect as a birthday, Mother's Day or thank you gift, these tickets are sure to please gardeners and history buffs alike.

☐ **YES!** Please send me: \_\_\_\_\_ tickets @ \$30 each

\$\_\_\_\_\_ total enclosed

Name: \_\_\_\_\_

Address: \_\_\_\_\_

City: \_\_\_\_\_ State: \_\_\_\_\_ Zip: \_\_\_\_\_

Please make check payable to **The Maryland House & Garden Pilgrimage** and mail it along with this order form to the Howard County Historical Society, P.O. Box 109, Ellicott City, MD 20141. Thank you and enjoy the tour!

# PLEASE SUPPORT OUR SPONSORS



**SILVER SPONSOR**  
**HISTORIC ELLICOTT PROPERTIES**  
**BRUCE T. TAYLOR, M.D.**  
 P.O. Box 396  
 ELLICOTT CITY, MD 21041  
 410-418-4547  
 WWW.TAYLORSSERVICE.COM/HEP/INDEX.HTML

**GOLD SPONSOR**  
**4:11 VISUAL SOLUTIONS**  
*Graphic Design & New Media*  
 411VISUALSOLUTIONS.COM  
 411VISUAL@GMAIL.COM  
 443-465-6240

**GOLD SPONSOR**  
**EURO RSCG**  
*Finding customers. Keeping customers. It's what we do.*  
 440 E. PRATT ST. 10TH FLOOR  
 BALTIMORE, MD 21202  
 JEFFREY.WYGANT@EURORSKG.COM  
 410-230-3700

## BRONZE SPONSORS

**DUSTIN SECURITY SOLUTIONS**  
 296 Close Quarters Drive  
 White Stone, VA 22578  
 dustinsecurity@gmail.com  
**HARRY H. WITZKE'S FAMILY FUNERAL HOME**  
 4112 Old Columbia Pike  
 Ellicott City, MD 21043  
 410-465-2848  
 harrystwizkefuneralhome.com  
**SHIRLEY L. W. MATLOCK**  
 Re/Max Realty 8815  
 Centre Park Drive Suite 110  
 Columbia, MD 21045  
 410-465-7777  
 shirleymatlock@remax.net

**KITTAMAQUANDI CHURCH**  
 5410 Leaf Treader Way  
 Columbia, MD 21044  
 410-730-4855  
 www.kc-church.org

**WYGANT DAVIES GENTILE DIRECT**  
 3920 College Ave.  
 Ellicott City, MD 21043  
 wdgdirect@mac.com  
 410-375-0587

**SILVER SPONSOR**  
**CLARKS ACE HARDWARE**  
 10325 BALTIMORE NATIONAL PIKE  
 ELLICOTT CITY, MD 21042  
 410-465-9633  
 WWW.CLARKSHARDWARE.COM



HOWARD COUNTY  
 HISTORICAL SOCIETY  
 P.O. BOX 109  
 ELLICOTT CITY, MD 21041  
 ADDRESS CORRECTION  
 REQUESTED

NON-PROFIT  
 U.S. POSTAGE  
**PAID**  
 ELLICOTT CITY, MD  
 PERMIT NO. 117